

PYRO-X

De-Ice control devices

Technical presentation

2013



Introduction

Meitav-tec is introducing a new concept of De-Icing control

Featuring:

- Simple and quick installation - “Plug & Play”
- Stylish Sensor and controller design
- Simple, Logical & accessible user Interface
- Sequencing between zones allowing larger area coverage with limited power supply
- Modularity – 1 to 4 contactors – up to 600A 600V 3#
- Easy and friendly technician access and operation
- Safe and reliable
- Energy saving algorithm
- UL and ETL certified

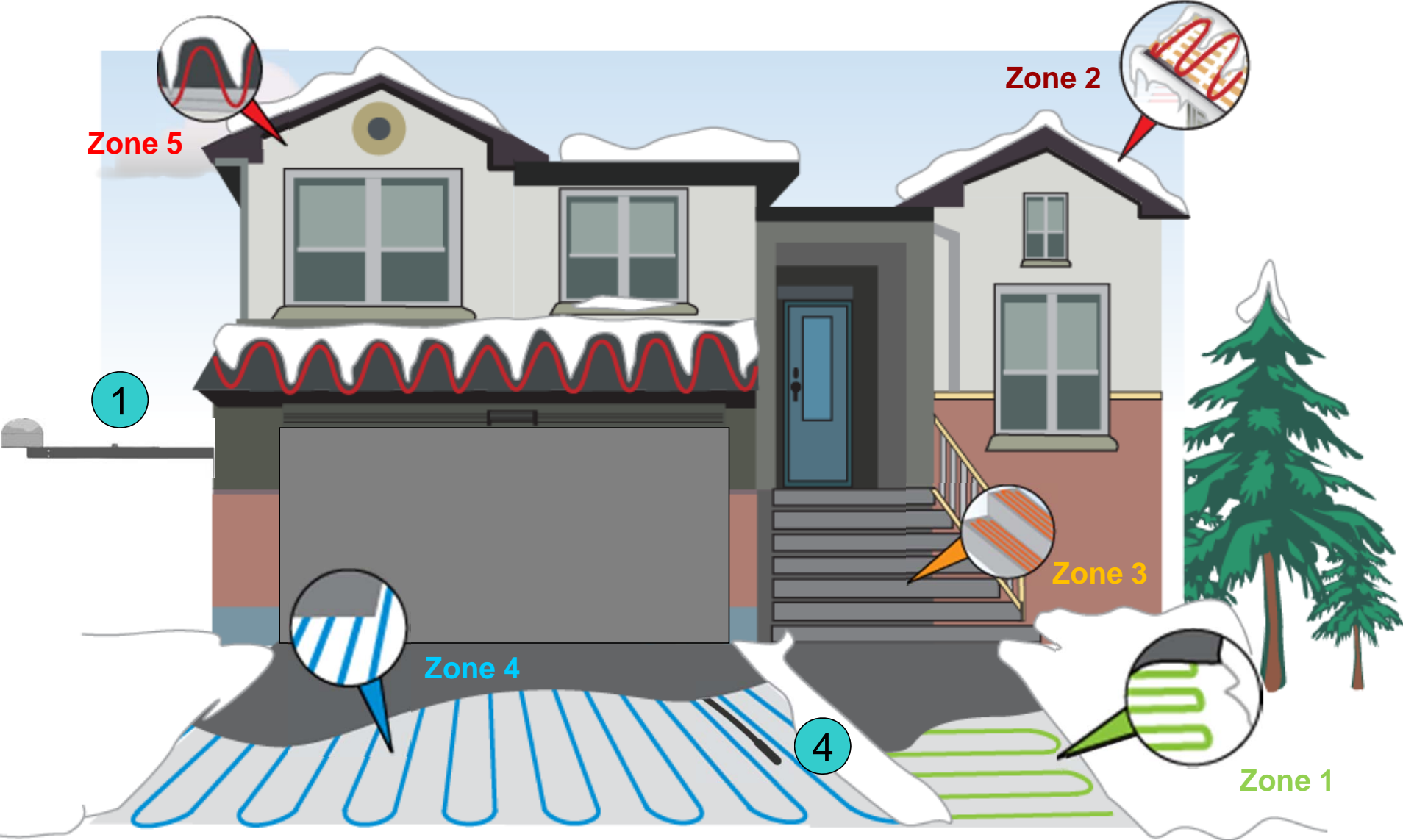
Out standing JIT Service and Technical Support

System components

1. Snow Sensor & Adjustable Mounting Arm
2. Controller Display
3. Power & Control Box
4. UL (Upper Limit) Temp. Sensor
5. Input for 3rd party (existing) Snow Sensor for gutter snow melting



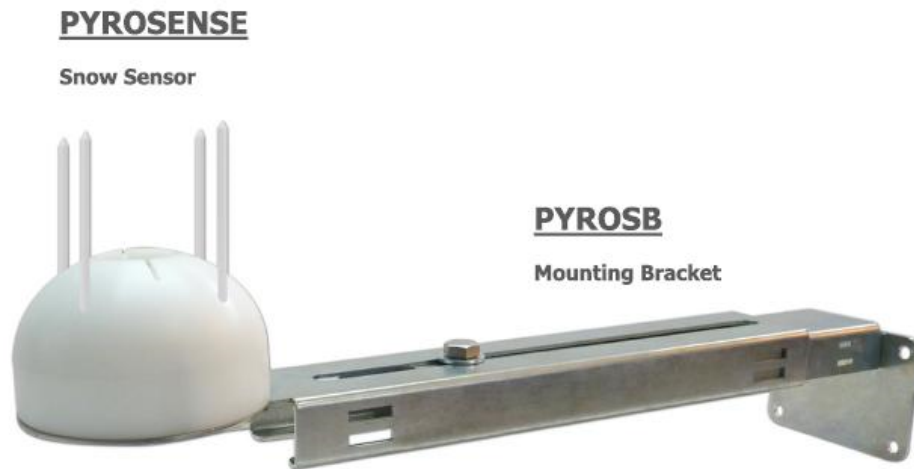
System components



System components

Snow Sensor + mounting Fixture

- 24VAC supply from controller
- Igloo shape design
- Conduit connection
- Adjustable rust proof arm – up to 20 inches length
- Anti birds nesting solution



System components

Controller

- 24VAC operated
- Inputs:
 - Meitav-tec Snow sensor (up to 4 sensors)
 - 3rd Party (existing) Snow sensor
 - Upper Limit Temperature sensor
- Outputs:
 - 4 Zones On/Off heaters control
 - 1 Gutter On/Off heater control
- LCD backlit display with operation indications
- User Friendly Technician Settings parameters



System components

Controller

Features

- Sequencing / Staggering 4 zones
 - 1/2/3/4 or 1/2/3 or 1+3/2+4
 - Adjustable Cycle time between zones
- Outputs status real time indication
- Disabling zones
- De-Icing Temperature Set-Point
- Upper Limit Temperature Set-Point - Adjustable
- Off Delay Time - Adjustable
- Selectable operation modes – Off/On/ Automatic
- Override operation – activates the system once for a configurable period of time
- Alarms and Sensors Errors indications



System components

UL Temperature input

- Isolated sensor
- Stops the operation when the heated surface reach a intended (Technician adjustable) temperature value
- Semi Rigid – can be pushed into conduit
- 10 meters (30 feet) cable length
- Installed in the surface plenum



System components

Power Box

- Single Door Wall mount Enclosure

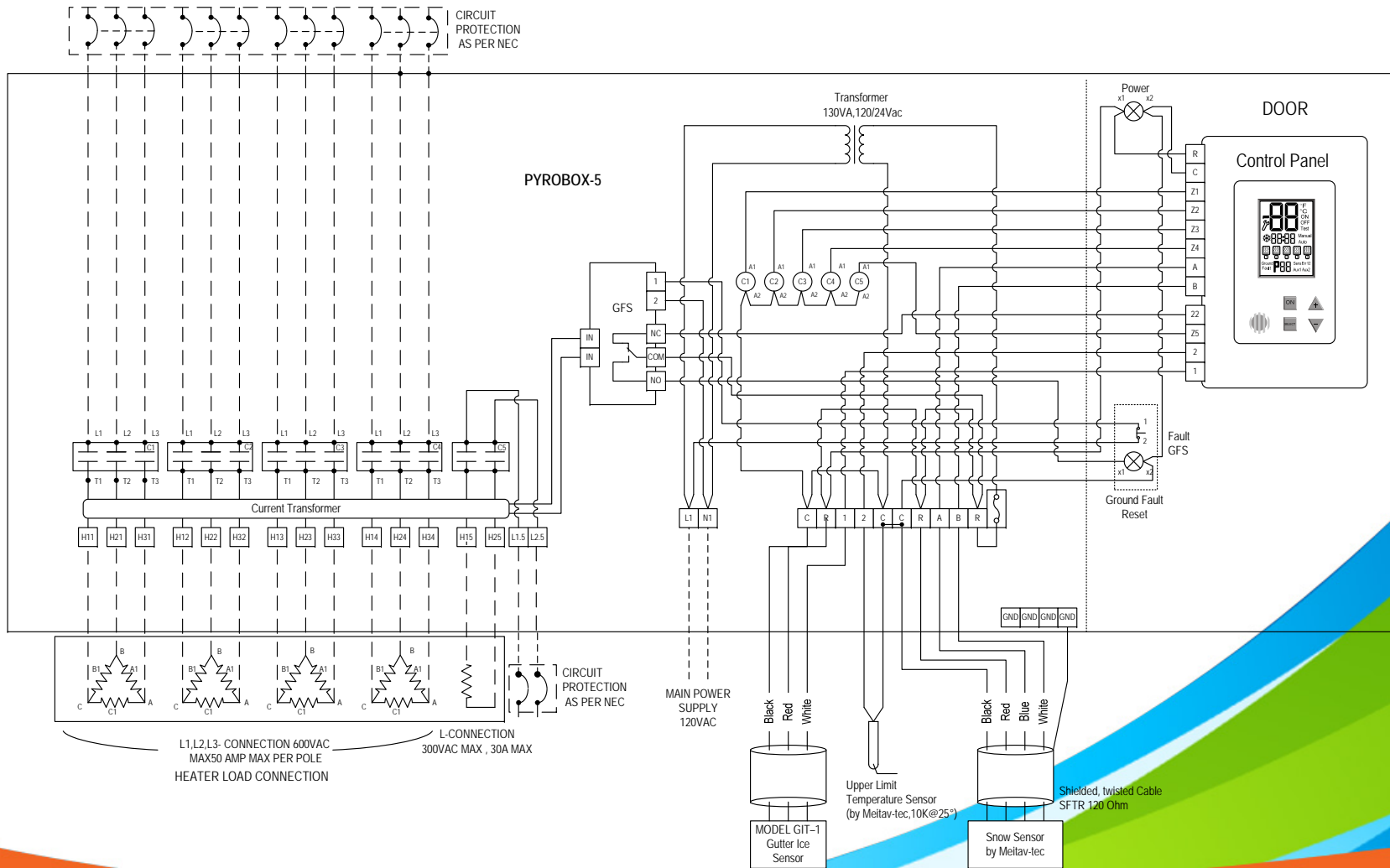
Dimensions: Industrial box: (20.6H X 20.6W X 9.1D)
(Inches) Residential box: (12.8H X 15.5W X 7D)

- Up to 600 VAC. 4x50 AMP 3 phases
- GFCI - Ground Fault Circuit Interrupter built-in
- Modular configuration
 - Allows installation of 1, 2, 3 or 4 zones + Gutter output
 - DIN Rail assembly for the terminals
- Output indication
- Industrial box – classic design
- IP66, NEMA 4 (before drilling for the LEDs and controller)



System components

Power Box – PYROBOX5 connections diagram



Summary

- **The new De-Icing system by Meitav-tec offers a modular solution in a friendly design, addressing the market needs**
- **Energy saving algorithm staggering between zones allows larger area cover with less available power**
- **One system will fit most application needs**
- **simple installation configurations of the power box will optimize cost.**
- **Compatibility with 3rd party sensors – retrofit and repairs advantage**
- **Professional Service and quick availability**

LCD Display

The diagram illustrates the LCD display's components and their functions:

- Temperature:** Shows 00 with $^{\circ}\text{F}$ and $^{\circ}\text{C}$ indicators.
- Mode:** Shows **ON** and **OFF**.
- Test:** Shows **Test**.
- Wrench Icon:** A wrench icon is shown next to the temperature display.
- Manual/Auto:** Shows $00:00$ with a snowflake icon and labels **Manual** and **Auto**.
- Zone Indicators:** Five icons representing zones 1 through 5, each with a number below it.
- Ground Fault:** Shows **P00** with labels **Ground Fault**, **Sens Err 12**, **Aux1**, and **Aux2**.



BACK

